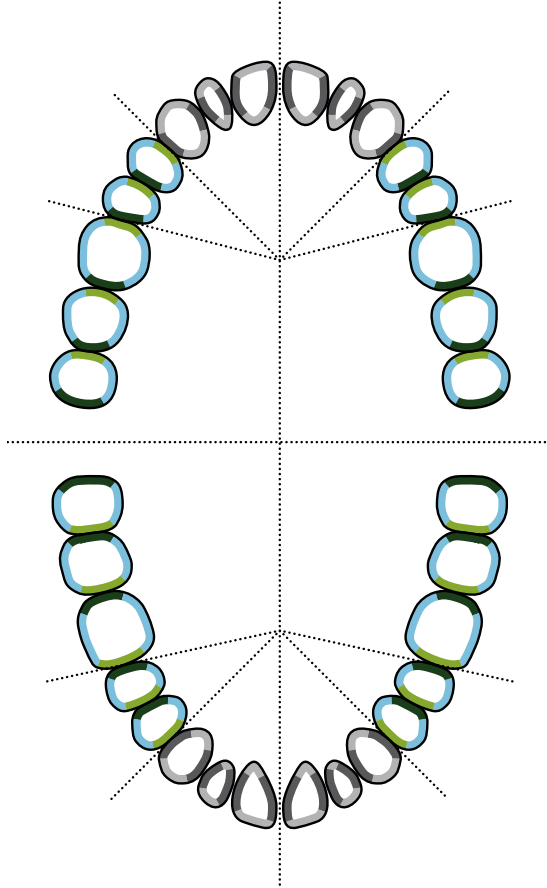








UPPER JAW / ARCATA SUPERIORE



LOWER JAW / ARCATA INFERIORE

| | | | |
|---|---------------|---|--------------|
|  | 1-2, 3-4, 5-6 |  | 7-8, 9-10 |
|  | 11-12, 15-16 |  | 13-14, 17-18 |

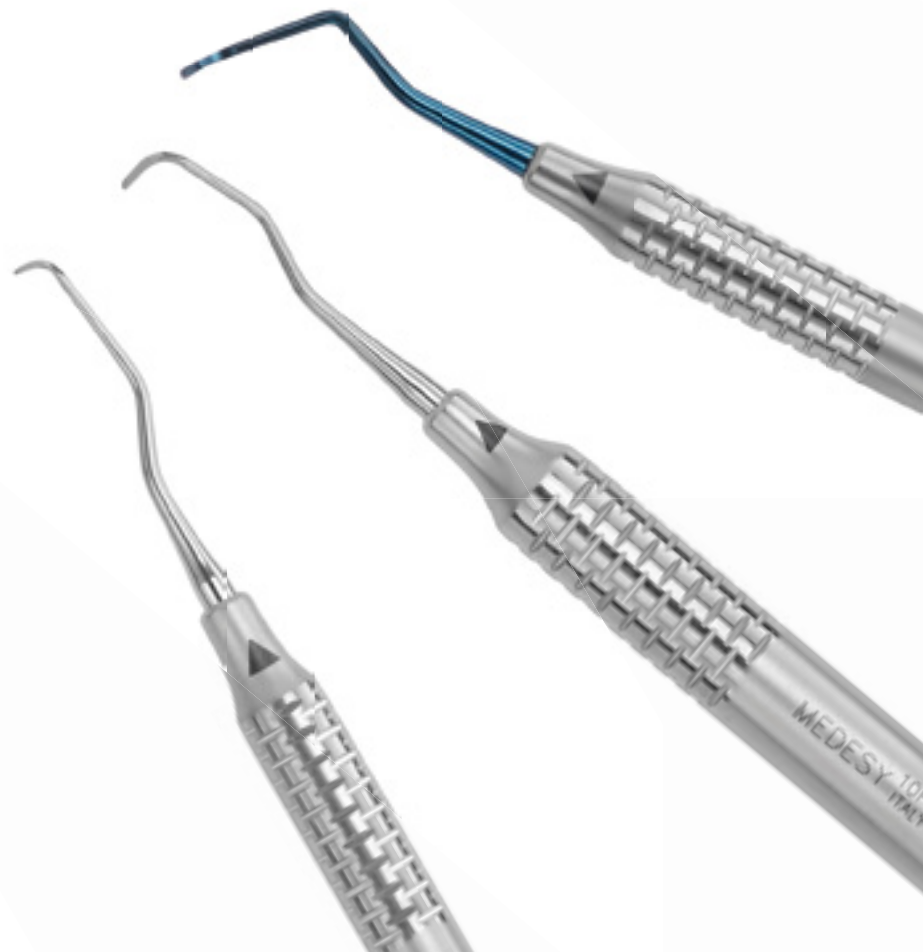
“ MEDESYS IN SPOT

Medesy cures are now available with a new 10 mm diameter handle: recent studies have proven that using an instrument having a larger diameter handle helps in preventing (or at least reducing) the carpal tunnel syndrome. Larger instruments handle diameters reduce hand muscle load and pinch force while very narrow diameter sizes increase the tunnel carpal pressure.

Le curesse Medesy sono disponibili nel nuovo diametro 10 mm: recenti studi dimostrano che un utilizzo costante di strumento con diametro maggiore, spesso aiuta a risolvere problemi (o per lo meno alleviare) dell'infiammazione del tunnel carpale. ”

A periodontal curette is an instrument used for the removal of sub-gingival calculus and for the root cleaning. **Gracey** cures are the most popular and common, less traumatic than the **Universal** type they are site specific as they are designed and assorted to adapt to the specific area or tooth surface to be treated (see the table on the left side). The blade of the Gracey curette is curved in the shank depending on the type and sharpened only in one side. The **Universal** curette has a blade that is perpendicular to its terminal shank; they are extremely versatile having sharp edges on both side of their blades. The **Scalers** are specifically conceived for the removal for heavy supra-gingival calculus. The blade of a Scaler is triangular in cross section, has sharp cutting edges on both sides and pointed tip.

Curette, strumento atto alla rimozione del tartaro sub-gengivale e pulizia radicolare. Le curesse di **Gracey** sono le più diffuse ed apprezzate, in quanto oltre ad essere meno traumatiche delle tradizionali, sono suddivise per tipologia di intervento: ogni modello di fatto è realizzato per effettuare un detartraggio su una zona ben definita (vedere tabella a lato). La lama risulta orientata ed inclinata a seconda del modello ed affilata solo su un lato. Le curesse **Universali** si distinguono per avere un'unica angolazione e una affilatura doppia, presente quindi su entrambi i lati: tali caratteristiche rendono queste curesse estremamente versatili. Gli **Scaler** infine, sono specificamente realizzati per la rimozione di importanti depositi di tartaro, sopra-gengivali. La lama tradizionale è a sezione triangolare affilata su entrambi i lati, con punta aguzza.



GRACEY CURETTES ALUMINIUM HANDLE
CURETTE GRACEY MANICO IN ALLUMINIO

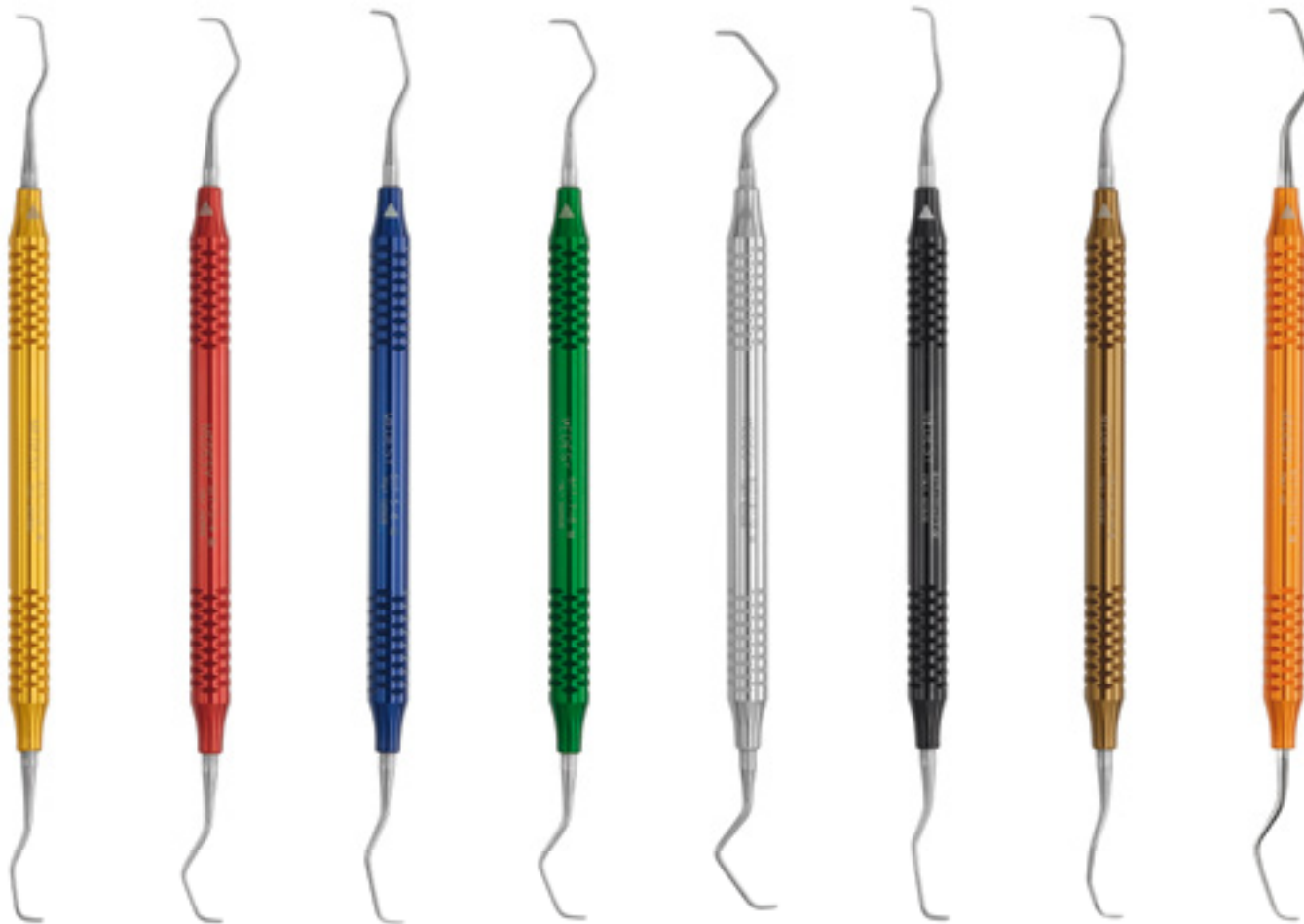


617 SET OF 8 GRACEY COLOUR CODE
617 SET DI 8 GRACEY CODICE COLORE

- | | | |
|-----------------|----------------------------|--|
| N. 1-2 | Yellow Giallo | Gentle bend for incisors and canines. Piega leggera per incisivi e canini. |
| N. 3-4 | Red Rosso | Normal bend for incisors and canines. Piega normale per incisivi e canini. |
| N. 5-6 | Blue Blu | Bent for front teeth and premolars. Piega per denti anteriori e premolari. |
| N. 7-8 | Green Verde | For buccal and lingual surfaces on premolars and molars. Premolari e molari superficie vestibolare e linguale. |
| N. 9-10 | White Bianco | For buccal and lingual surfaces on premolars and molars. Premolari e molari superficie vestibolare e linguale. |
| N. 11-12 | Black Nero | For mesial surface on rear teeth. Per superficie mesiale dei denti posteriori. |
| N. 13-14 | Brown Marrone | For distal surface on rear teeth. Per superficie distale dei denti posteriori. |
| N. 15-16 | Orange Arancione | For retrograds. Mesial-lingual. Per retrogradi mesiale e linguale. |



617/SET
Composed of 8 pcs
Composto da 8 pezzi



617/1-2

Gracey

Aluminium handle
Manico alluminio

617/3-4

Gracey

Aluminium handle
Manico alluminio

617/5-6

Gracey

Aluminium handle
Manico alluminio

617/7-8

Gracey

Aluminium handle
Manico alluminio

617/9-10

Gracey

Aluminium handle
Manico alluminio

617/11-12

Gracey

Aluminium handle
Manico alluminio

617/13-14

Gracey

Aluminium handle
Manico alluminio

617/15-16

Gracey

Aluminium handle
Manico alluminio



PERIODONTAL / PARODONTOLOGIA



GRACEY CURETTES "RIGID TYPE": has a thicker and less flexible shank than the standard Gracey. It can be used for treatments usually performed with a scaler.

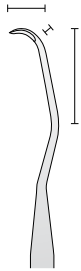
GRACEY CURETTES "LONG TYPE": has a longer shank, 3mm longer than standard Gracey and allows deep reaching into the periodontal pockets.

GRACEY CURETTES "SHORT TYPE": having the same characteristics as "long type" except for the cutting end, which is shorter to allow easier sub-gingival insertion even in the deepest and narrow periodontal pockets.

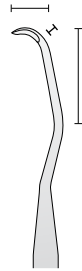
GRACEY CURETTES "TIPO RIGIDO": curette con stelo più grosso e meno flessibile rispetto la Gracey tradizionale. Utili in operazioni che abitualmente richiedono l'utilizzo di scalers.

GRACEY CURETTES "TIPO LUNGO": curette con stelo più lungo di 3mm rispetto la Gracey tradizionale, con lo scopo di intervenire in profondità nelle tasche parodontali.

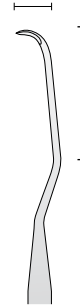
GRACEY CURETTES "TIPO CORTO": curette con la stessa caratteristica della "tipo lungo" con la differenza di avere la parte terminale più corta, al fine di poter intervenire nelle tasche parodontali profonde e strette.



GRACEY CURETTES
GRACEY CURETTES



GRACEY CURETTES "RIGID TYPE"
GRACEY CURETTES "TIPO RIGIDO"



GRACEY CURETTES "LONG TYPE"
GRACEY CURETTES "TIPO LUNGO"



GRACEY CURETTES "SHORT TYPE"
GRACEY CURETTES "TIPO CORTO"

Our heritage and background are the pillars as well as the engine of Medesy production where each single instrument is the perfect combination between artisanal expertise and technological approach: the added value of our new handle, Dalila, is the expression of our artisanal culture and a strong investment in innovation and research. Our purpose: offering you high-performance instruments which may improve and fully respond to your daily needs.

DALILA handle specially designed to ensure you:

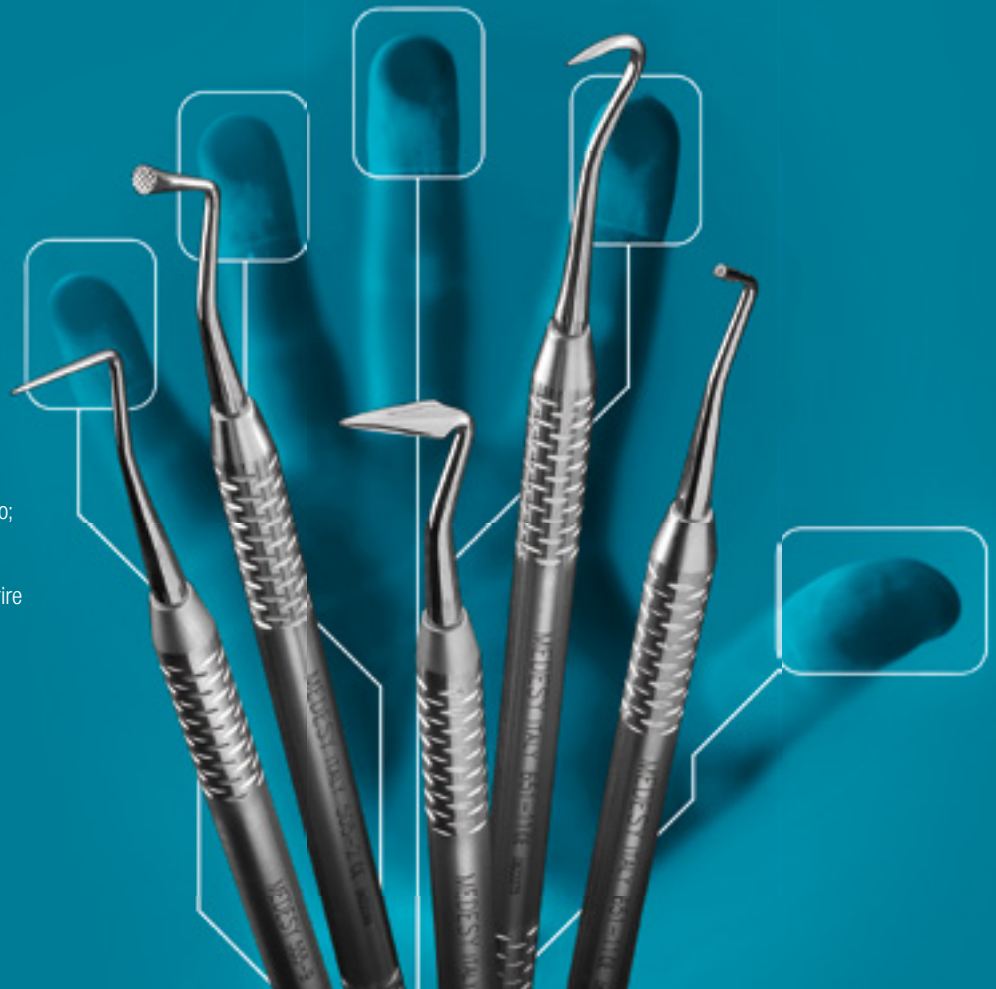
- Innovative design
- Fast cleaning
- Easier sterilization
- A more comfortable and secure grip
- Available in 6 Ø mm solid, 8 Ø mm hollow, 10 Ø mm hollow

La nostra cultura e la nostra secolare esperienza sono i pilastri e la principale energia della produzione Medesy: ogni singolo strumento è la concretizzazione del perfetto equilibrio tra esperienza artigianale e sviluppo tecnologico; il valore aggiunto di Dalila, il nostro nuovo manico, testimonia sia la nostra cultura sia il nostro costante investimento in innovazione e ricerca, così da potervi offrire strumenti sempre più rispondenti alle vostre esigenze.

Il manico **DALILA** è stato appositamente studiato per garantirvi:

- Presa più comoda e sicura
- Design innovativo
- Pulizia più semplice
- Sterilizzazione più efficace
- Disponibile in 6 Ø mm solido, 8 Ø mm vuoto, 10 Ø mm vuoto

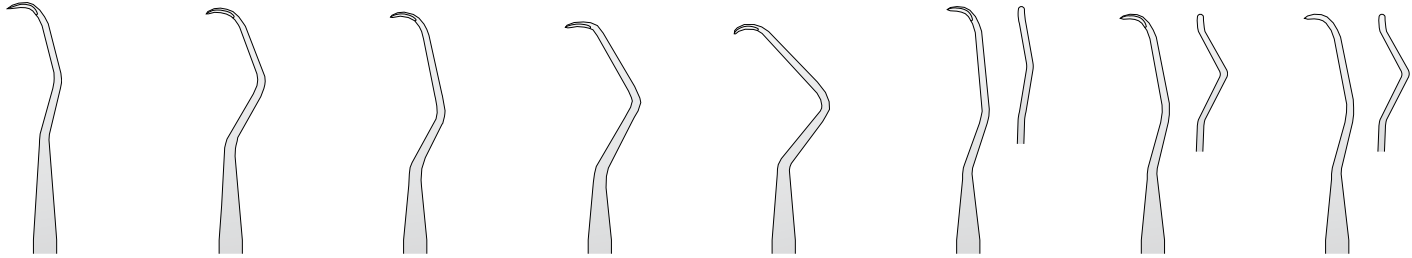
DALILA™



GRACEY CURETTES
CURETTE GRACEY



625/1-2.HL8
(1:1 scale / scala 1:1)



625/1-2.HL8
Gracey

625/3-4.HL8
Gracey

625/5-6.HL8
Gracey

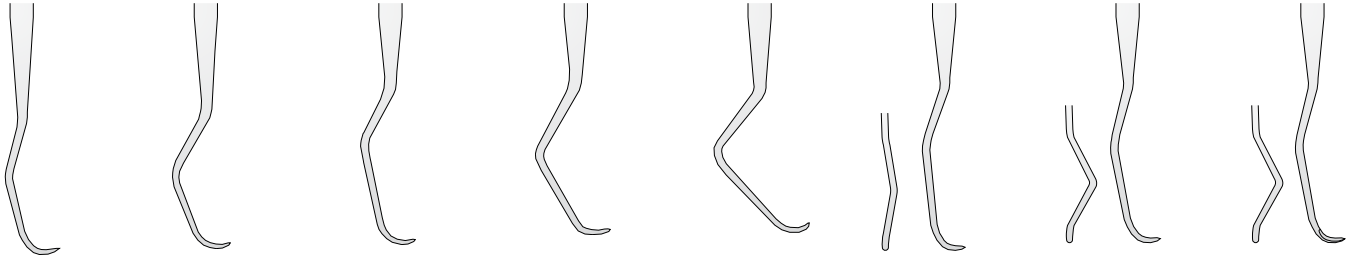
625/7-8.HL8
Gracey

625/9-10.HL8
Gracey

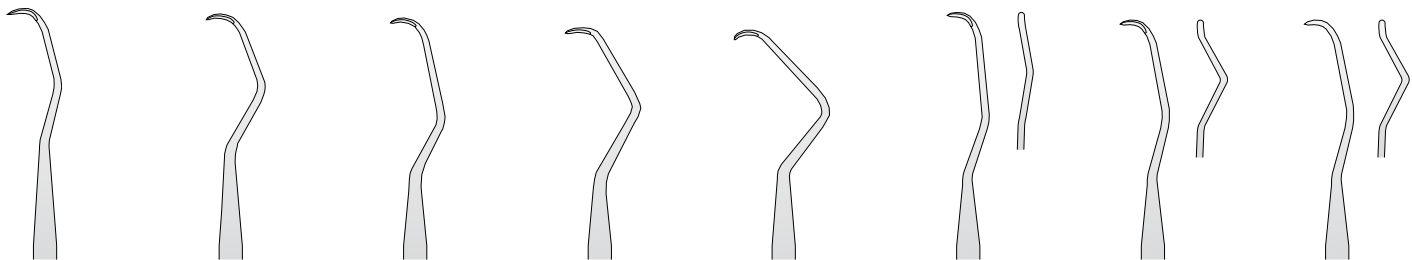
625/11-12.HL8
Gracey

625/13-14.HL8
Gracey

625/15-16.HL8
Gracey



625/1-2.HL10
(1:1 scale / scala 1:1)



625/1-2.HL10
Gracey

625/3-4.HL10
Gracey

625/5-6.HL10
Gracey

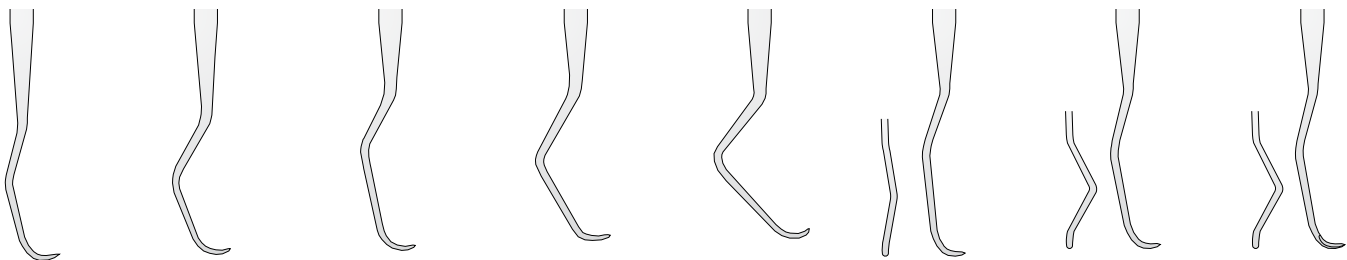
625/7-8.HL10
Gracey

625/9-10.HL10
Gracey

625/11-12.HL10
Gracey

625/13-14.HL10
Gracey

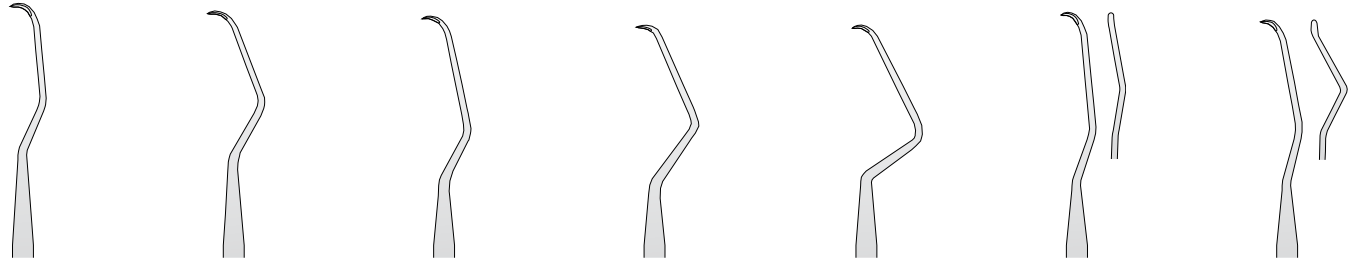
625/15-16.HL10
Gracey



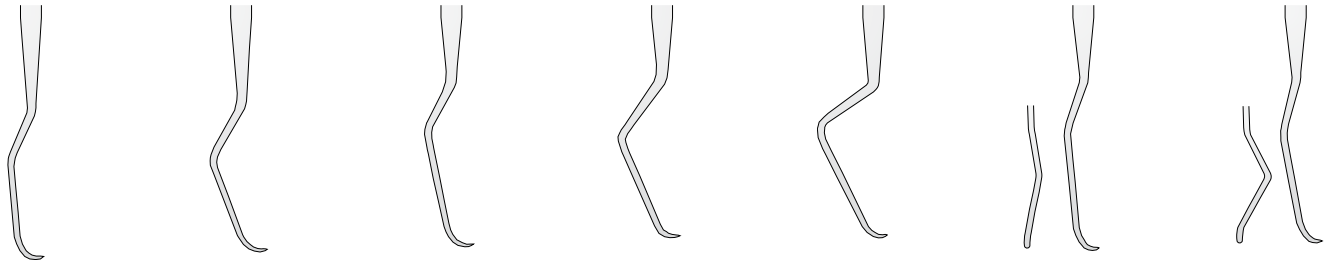


GRACEY CURETTES, SHORT TYPE
CURETTE GRACEY, TIPO CORTO

669/1-2.HL8
(1:1 scale / scala 1:1)

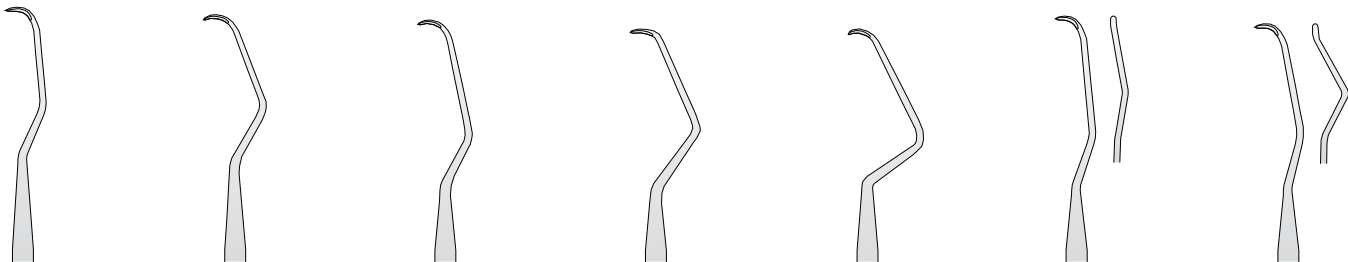


| | | | | | | |
|---|---|---|---|---|---|---|
| 669/1-2.HL8 669/1-2.HL10 Short type Gracey | 669/3-4.HL8 669/3-4.HL10 Short type Gracey | 669/5-6.HL8 669/5-6.HL10 Short type Gracey | 669/7-8.HL8 669/7-8.HL10 Short type Gracey | 669/9-10.HL8 669/9-10.HL10 Short type Gracey | 669/11-12.HL8 669/11-12.HL10 Short type Gracey | 669/13-14.HL8 669/13-14.HL10 Short type Gracey |
|---|---|---|---|---|---|---|

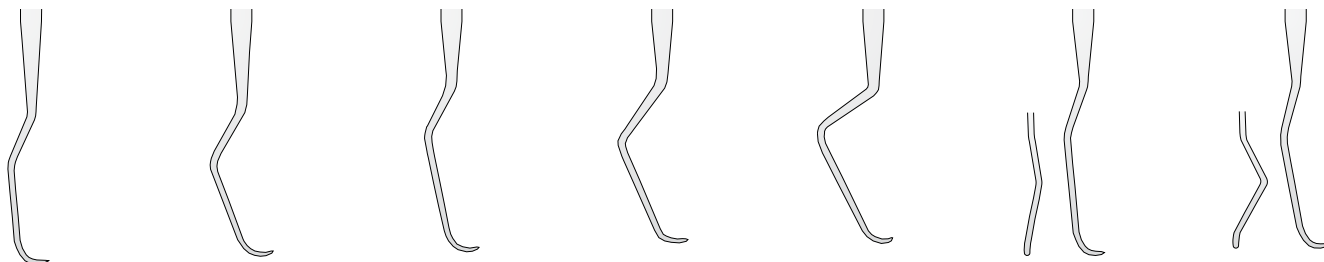


GRACEY CURETTES, LONG TYPE
CURETTE GRACEY, TIPO LUNGO

679/1-2.HL8
(1:1 scale / scala 1:1)



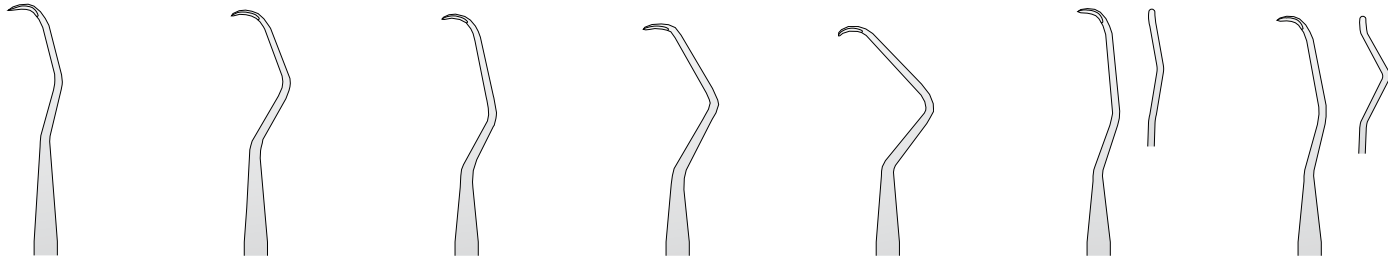
| | | | | | | |
|--|--|--|--|--|--|--|
| 679/1-2.HL8 679/1-2.HL10 Long type Gracey | 679/3-4.HL8 679/3-4.HL10 Long type Gracey | 679/5-6.HL8 679/5-6.HL10 Long type Gracey | 679/7-8.HL8 679/7-8.HL10 Long type Gracey | 679/9-10.HL8 679/9-10.HL10 Long type Gracey | 679/11-12.HL8 679/11-12.HL10 Long type Gracey | 679/13-14.HL8 679/13-14.HL10 Long type Gracey |
|--|--|--|--|--|--|--|



GRACEY CURETTES, RIGID TYPE
CURETTE GRACEY, TIPO RIGIDO



628/1-2.HL8
(1:1 scale / scala 1:1)



| | | | | | | |
|--|--|--|--|---|--|--|
| 628/1-2.HL8 Rigid type Gracey | 628/3-4.HL8 Rigid type Gracey | 628/5-6.HL8 Rigid type Gracey | 628/7-8.HL8 Rigid type Gracey | 628/9-10.HL8 Rigid type Gracey | 628/11-12.HL8 Rigid type Gracey | 628/13-14.HL8 Rigid type Gracey |
|--|--|--|--|---|--|--|



Medesy new curettes set. Follow the below simple instructions to order the full line of 7 (or 8) of required Gracey curettes:

Questo è il nuovo ed originale cofanetto per curette Medesy. Si può facilmente ordinare la serie completa di 7 (o 8) pezzi del modello Gracey richiesto, seguendo le semplici indicazioni sotto riportate:

| | | |
|------------------------------|------------|---------------------|
| 625 (Standard Gracey) | SET | HL8 HL10 |
| 628 (Rigid type) | | |
| 669 (Short type) | | |
| 679 (Long type) | | |

Ex: **669/SET.HL8**

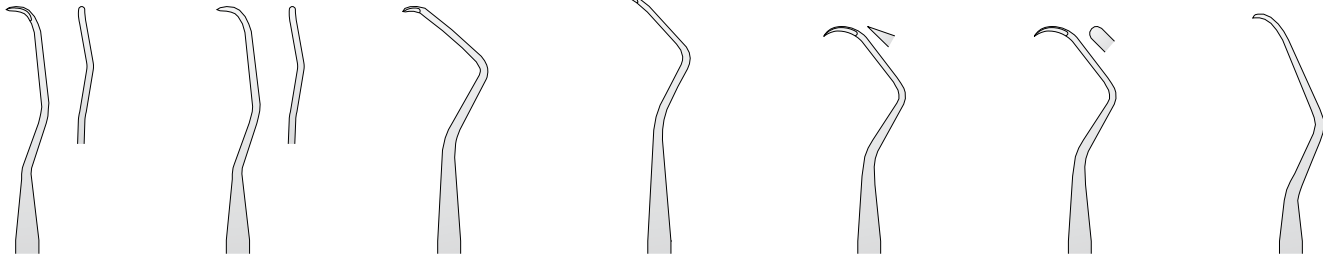




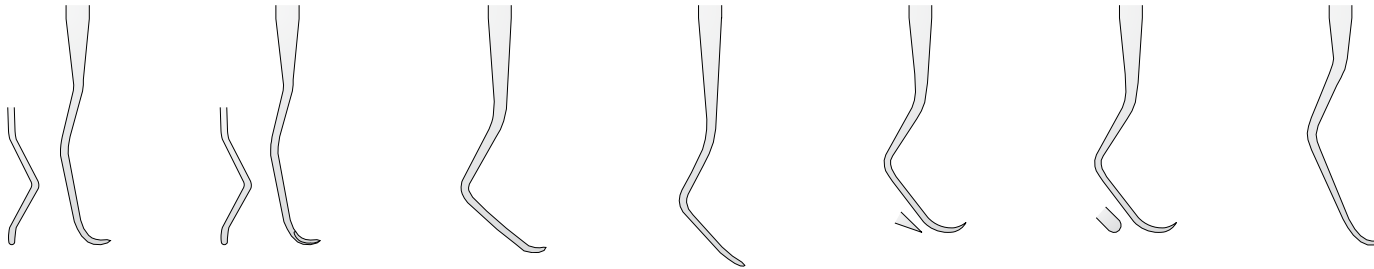
UNIVERSAL CURETTES
CURETTE UNIVERSALI

639/23.HL8

(1:1 scale / scala 1:1)

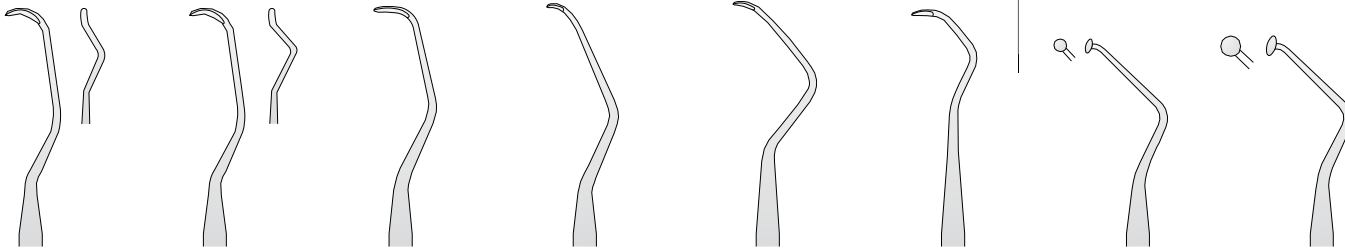


| | | | | | | |
|---|---|--|--|---|--|--|
| 631/11-14 631/11-14.HL8 Gracey Mesial / Distal | 631/12-13 631/12-13.HL8 Gracey Mesial / Distal | 623/412 623/412.HL8 411/412 Universal | 623/414 623/414.HL8 413/414 Universal | 639/23 639/23.HL8 Swiss type Universal | 639/24 639/24.HL8 Swiss type | 639/25 639/25.HL8 Swiss type |
|---|---|--|--|---|--|--|



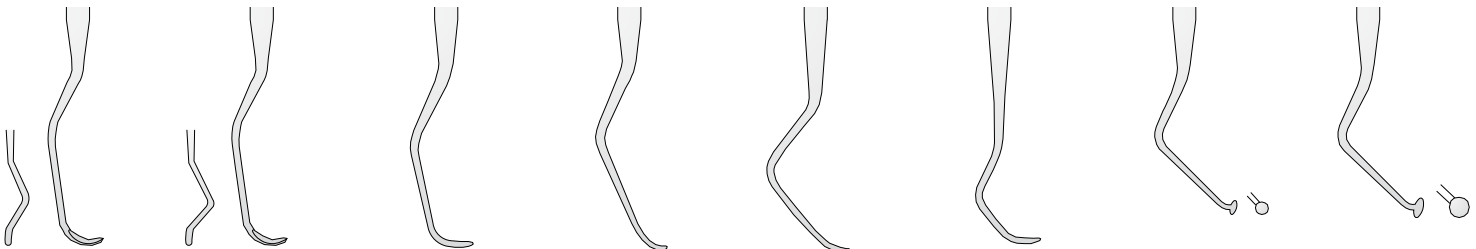
627/2

(1:1 scale / scala 1:1)

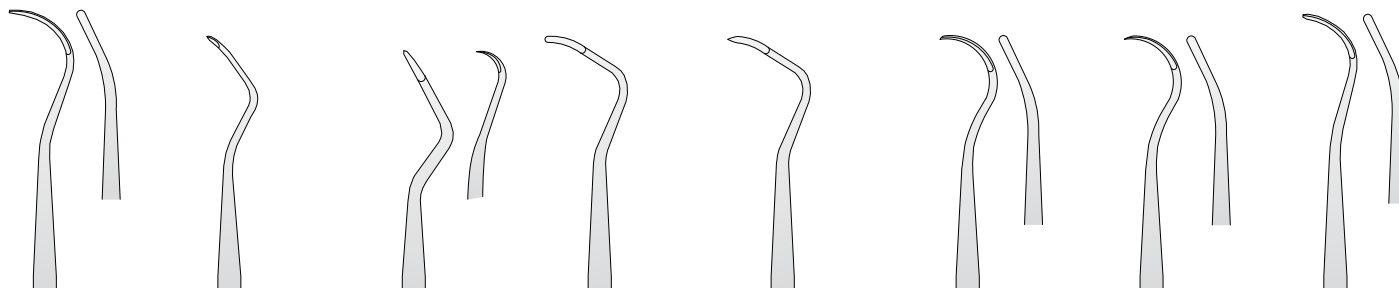


FURCATION CURETTES

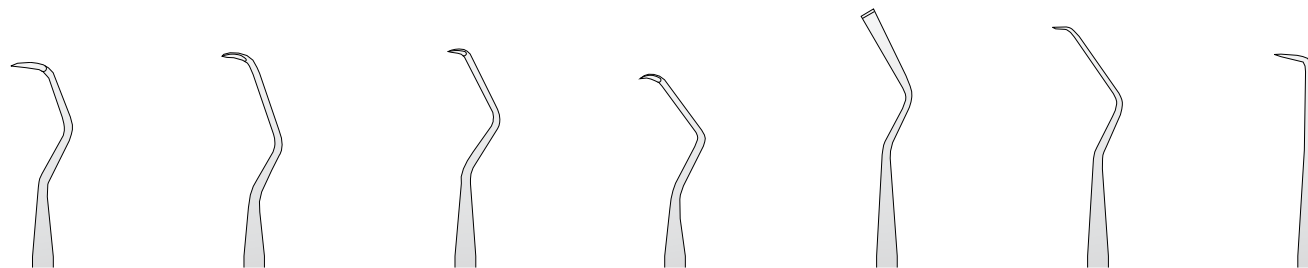
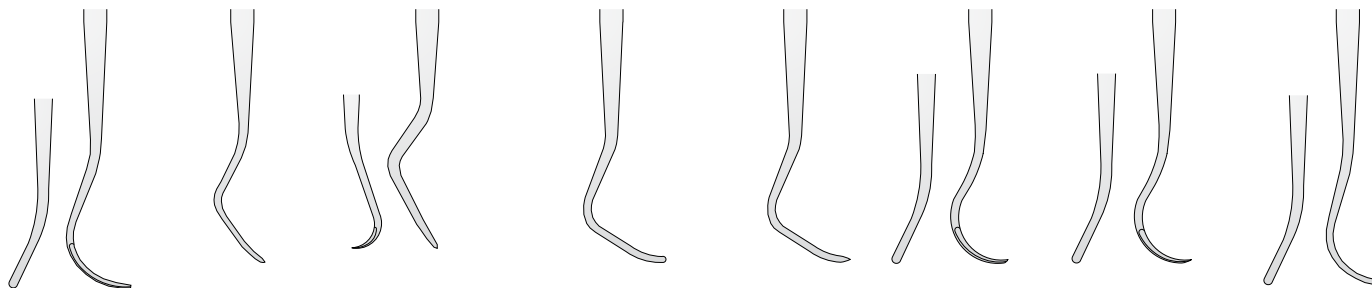
| | | | | | | | |
|--|---|--|--|---|---|--|--|
| 626/2 626/2.HL8 Langer 1/2 Mandibular posterior | 626/4 626/4.HL8 Langer 3/4 Maxillary posterior | 626/6 626/6.HL8 Langer 5/6 Mandibular and maxillary posterior | 627/2 627/2.HL8 Columbia 2R/2L Anterior | 627/4 627/4.HL8 Columbia 4R/4L Posterior | 627/14 627/14.HL8 Columbia 13/14 Universal | 632/1 632/1.HL8 De Marco 1 | 632/2 632/2.HL8 De Marco 2 |
|--|---|--|--|---|---|--|--|



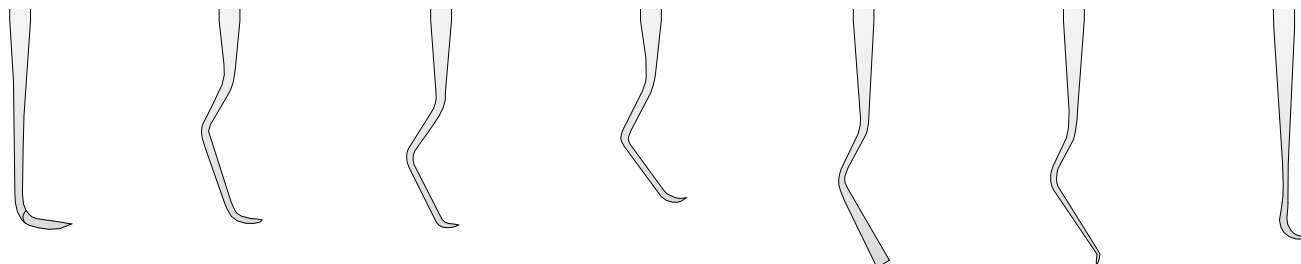
629/17
(1:1 scale / scala 1:1)



| | | | | | | | |
|---|--|--|--|--|--|--|--|
| 633/8 633/8.HL8 Younger-Good 7/8 | 629/12 629/12.HL8 Mc Call 11/12 | 629/13 629/13.HL8 Mc Call 11A/12A | 629/14 629/14.HL8 Mc Call 13/14 | 629/15 629/15.HL8 Mc Call 13S/14S | 629/17 629/17.HL8 Mc Call 17/18 | 629/19 629/19.HL8 Mc Call 17S/18S | 629/20 629/20.HL8 Mc Call 19/20 |
|---|--|--|--|--|--|--|--|



| | | | | | | |
|--|---|---|---|---|---|--|
| 624/1 624/1.HL8 Goldman-Fox 1 For supragingival and subgingival calculus | 624/2 624/2.HL8 Goldman-Fox 2 | 624/3 624/3.HL8 Goldman-Fox 3 | 624/4 624/4.HL8 Goldman-Fox 4 | 624/5 624/5.HL8 Goldman-Fox 5 | 624/6 624/6.HL8 Goldman-Fox 6 | 624/21 624/21.HL8 Goldman-Fox 21 |
|--|---|---|---|---|---|--|



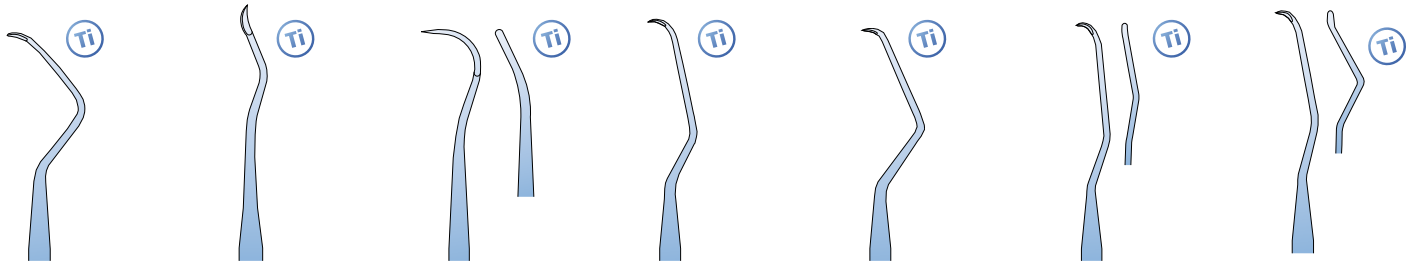


TITANIUM CURETTES

CURETTE IN TITANIO

TIPS IN PURE TITANIUM / PUNTE IN PURO TITANIO

651/11Ti.HL8
(1:1 scale / scala 1:1)



627/4Ti.HL8
627/4Ti.HL10
Columbia 4R/4L

Titanium
Titanio

640/5Ti.HL8
640/5Ti.HL10
Scaler 204 SD

Titanium
Titanio

651/11Ti.HL8
651/11Ti.HL10
Scaler H6/7

Titanium
Titanio

669/5-6Ti.HL8
669/5-6Ti.HL10
Gracey Short type

Titanium
Titanio

669/7-8Ti.HL8
669/7-8Ti.HL10
Gracey Short type

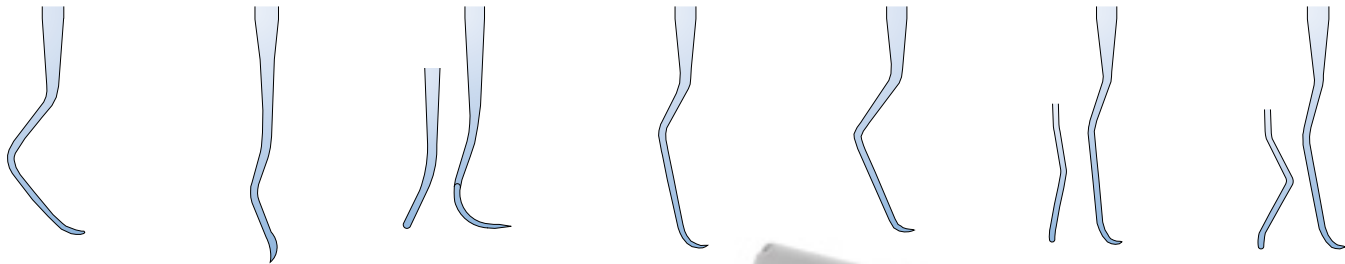
Titanium
Titanio

669/11-12Ti.HL8
669/11-12Ti.HL10
Gracey Short type

Titanium
Titanio

669/13-14Ti.HL8
669/13-14Ti.HL10
Gracey Short type

Titanium
Titanio



The bacterial aggression observed on the neck portion of the implants is similar to the bacterial aggression observable at the muco-gingival junction of the tooth. The stainless steel instruments may contaminate the titanium made implants while plastic instruments do not fully remove the failing tissues around the implant. Hence the need of using instruments made of titanium, the unique solution for a real efficient and fully safe handling on and close to the implants sites. Blue colour for a simple and fast identification of titanium tips, from standard gray of stainless steel. MEDESYS Perimplantite kit includes 4 curettes "Short Type"; 1 curette Columbia; 2 Scalers; 1 periodontal probe.

L'aggressione batterica osservata nel collo degli impianti è simile a quella presente a livello della giunzione muco gengivale del dente. Gli strumenti in acciaio possono contaminare il titanio degli impianti, mentre quelli in plastica non sono in grado di rimuovere in modo efficiente la parte in oggetto. Da qui la necessità di usare strumenti in titanio, la soluzione sicuramente più adeguata per una gestione del problema efficiente ed in piena sicurezza in prossimità degli impianti. Il colore blu delle punte, serve per identificare in modo semplice e sicuro il titanio impiegato, rispetto al tradizionale acciaio. Il kit Perimplantite di MEDESYS è composto da: 4 curettes "Tipo Corto"; 1 curette Columbia; 2 scaler; 1 sonda parodontale.

1671/3

Perimplantite Kit
Kit Perimplantite

Content / Contenuto:

- 548/4 PT** Probe CP15
- 627/4 Ti** Curette Columbia 4R/4L Titanium
- 651/11 Ti** Scaler H6-H7 Titanium
- 669/5-6Ti.HL10** Gracey short type Titanium
- 669/7-8Ti.HL10** Gracey short type Titanium
- 669/11-12Ti.HL10** Gracey short type Titanium
- 669/13-14Ti.HL10** Gracey short type Titanium
- 980/9** Gammafix tray Doi



KIT PERIMPLANTITE

PERIODONTAL HOES



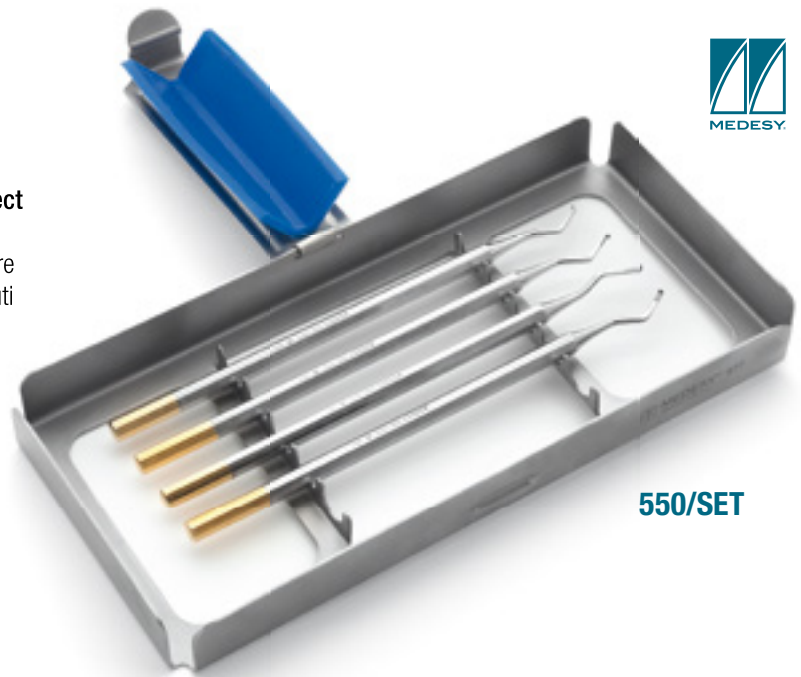
Small head for deep pockets
 Ridotta estremità per raggiungere punti profondi

Round corners to protect root and tissue
 Angoli ridotti per prevenire lesioni alla radice e tessuti

The TC Tungsten Carbide gives greater enamel cutting efficiency and work result
 L'inserto in TC assicura un taglio perfetto dello smalto

Four different shapes, to cover all your needs
 Quattro diverse forme, per coprire tutte le tue necessità

Extra strength thanks to the steel shoulder
 Maggior rigidità grazie al rinforzo in acciaio



550/SET



(1:1 scale / scala 1:1)

550/10 TC

550/10 TC

Hoe

Anterior 1
 Anteriore 1

550/11 TC

Hoe

Anterior 2
 Anteriore 2

550/12 TC

Hoe

Posterior 1
 Posteriore 1

550/13 TC

Hoe

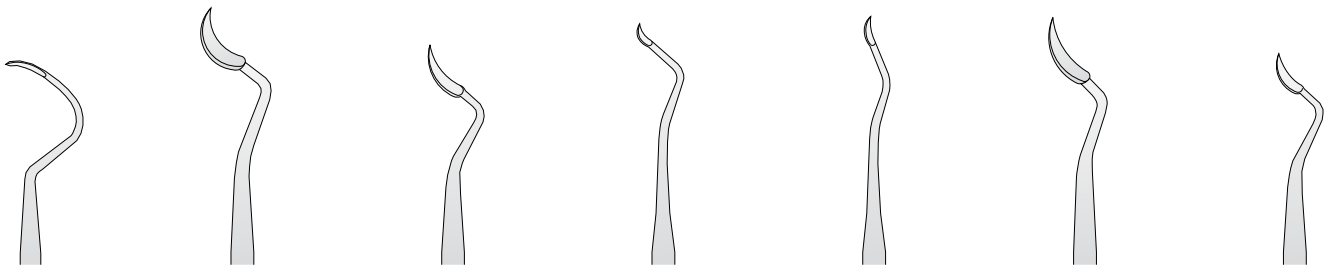
Posterior 2
 Posteriore 2



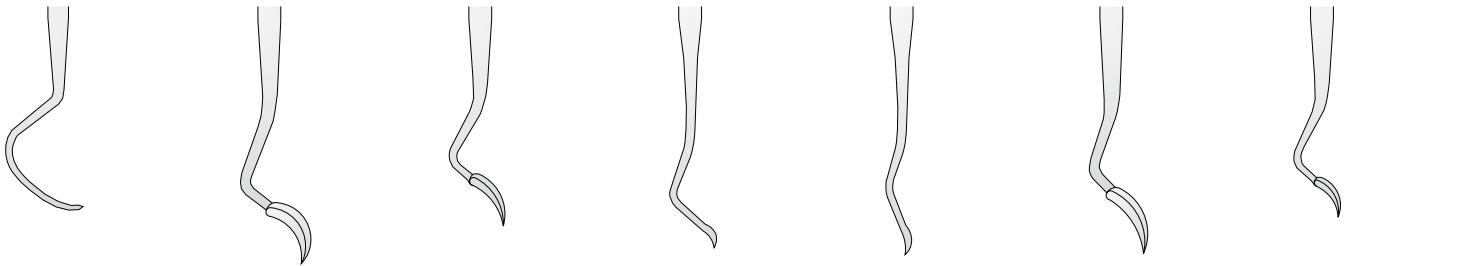


SCALERS

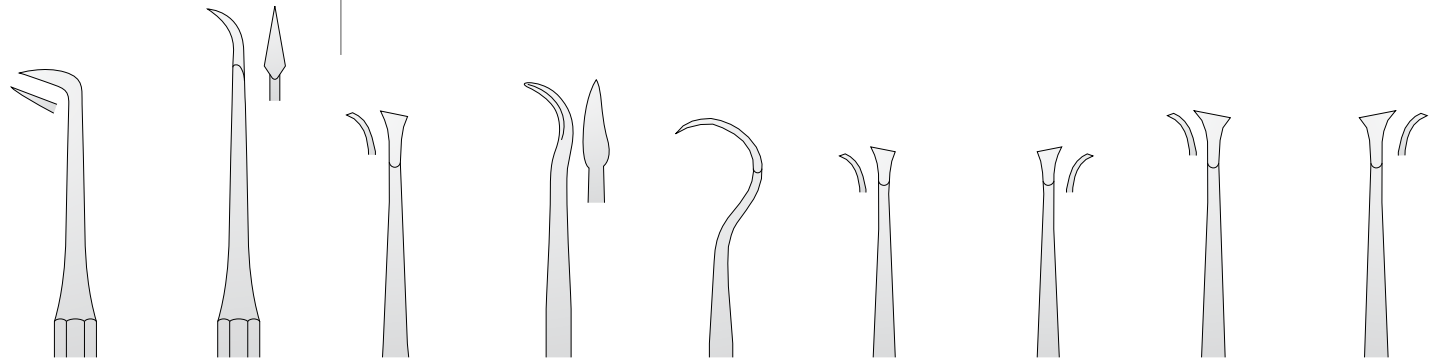
SCALERS



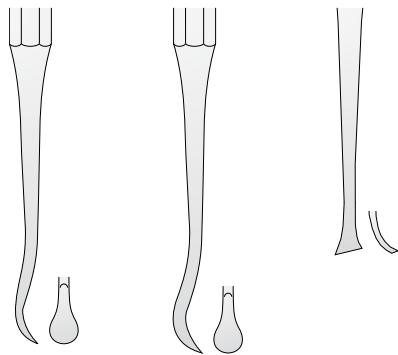
| | | | | | | |
|--|---|---|--|--|--|---|
| 656/1 656/1.HL8 ME-1 | 640/2 640/2.HL8 CK6 Crane-Caplan 6 | 640/24 640/24.HL8 204 | 640/1 640/1.HL8 204 S Posterior Supragingival Interproximal | 640/5 640/5.HL8 204 SD Contra angle for excellent access to distal surface | 640/3 640/3.HL8 CI 2/3 | 640/13 640/13.HL8 2/3 Taylor |
|--|---|---|--|--|--|---|

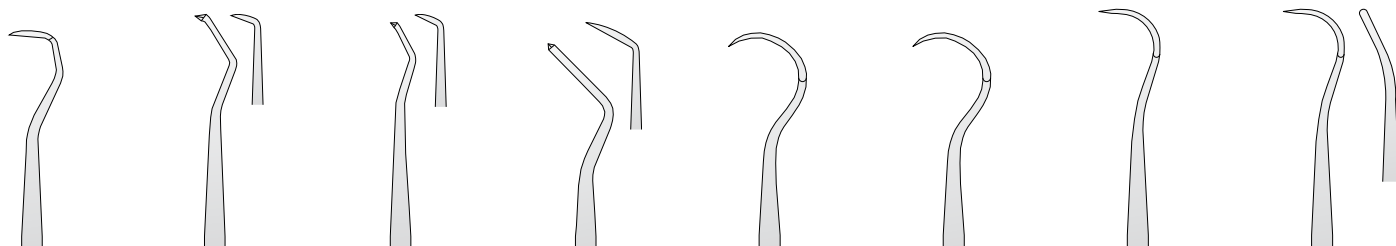


OCTAGONAL HANDLE MANICI OTTAGONALI



| | | | | | | | | |
|---|----------------------|------------------------------------|--------------------------|--------------------------|---|--|---|--|
| 654 Mitchell Osteo Trimmer | 655 Cumine | 652/50 Darby-Perry 1R-1L | 653/1 Williger | 653/U15 Towner | 653/11 Darby-Perry 1R Right Destro | 653/12 Darby-Perry 1L Left Sinistro | 653/21 Darby-Perry 2R Right Destro | 653/22 Darby-Perry 2L Left Sinistro |
|---|----------------------|------------------------------------|--------------------------|--------------------------|---|--|---|--|





651/30-33
651/30-33.HL8
Jaquette
Anterior

651/31-32
651/31-32.HL8
Jaquette
Posterior

651/34-35
651/34-35.HL8
Jaquette
Posterior

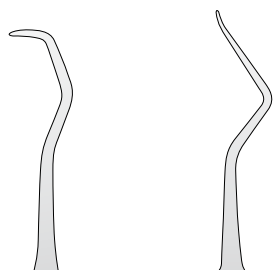
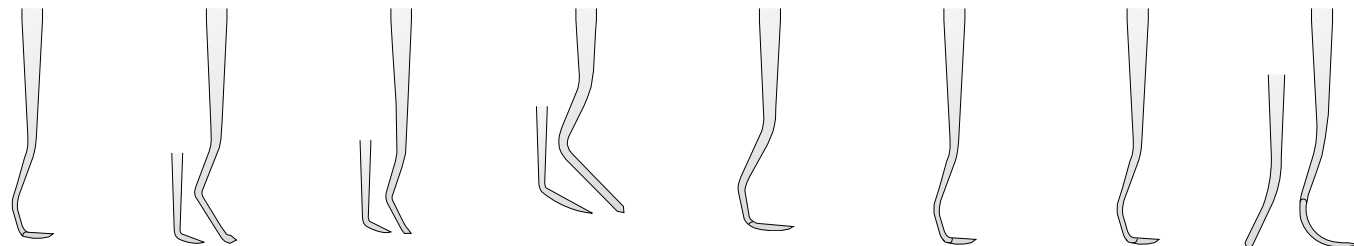
651/37-38
651/37-38.HL8

651/U15-30
651/U15-30.HL8
Towner-Jaquette

651/U15-33
651/U15-33.HL8
Towner-Jaquette

651/10
651/10.HL8
Hygienist-Towner H5/33
Anteriors interproximal
and cervical area

651/11
651/11.HL8
Hygienist H6/H7
Interproximal areas
Anteriors and
premolars



652/2-3
Mc Farlane 2-3

652/4-5
Mc Farlane 4-5



Sharpening process
Processo di affilatura



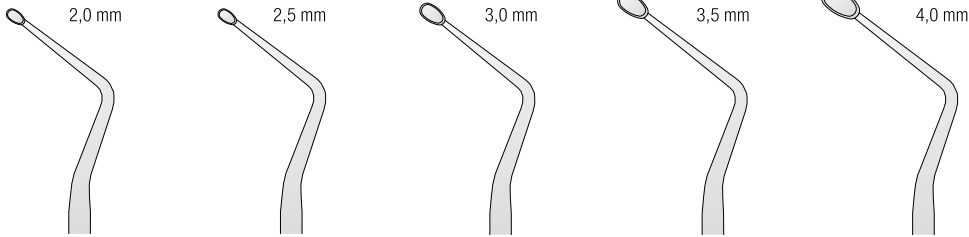


BONE CURETTES

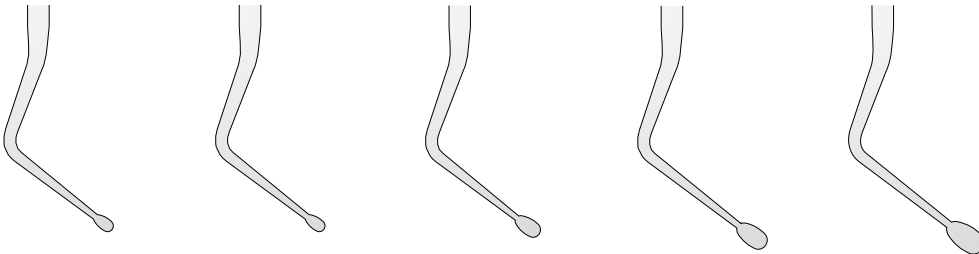
CUCCHIAI ALVEOLARI

660/3

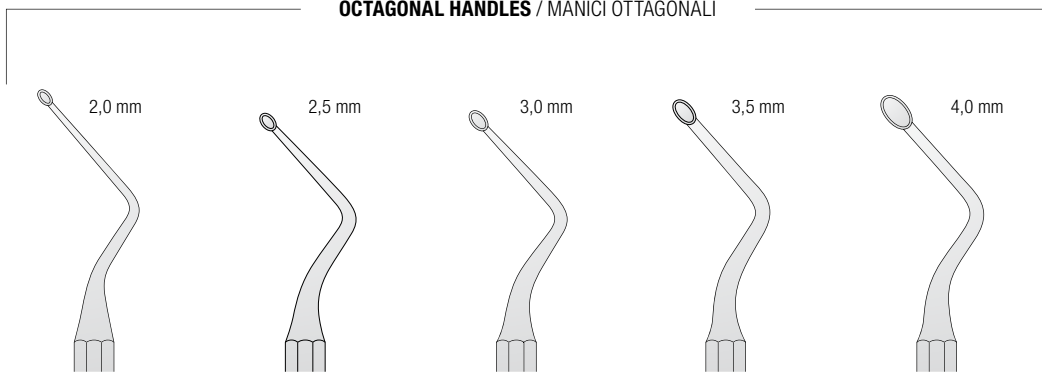
(1:1 scale / scala 1:1)



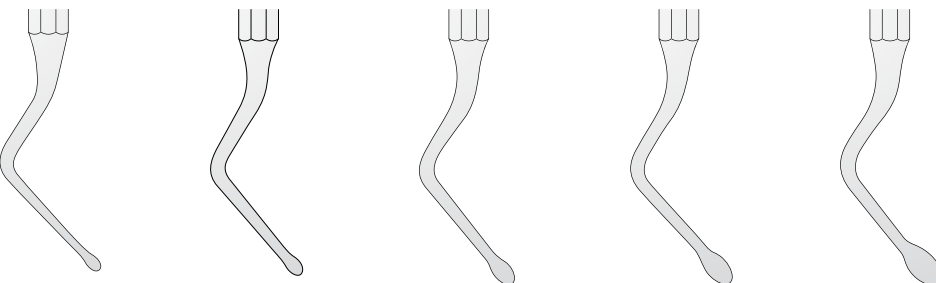
| | | | | |
|--|--|--|--|--|
| 660/0 660/0.HL8 660/0.HL10 Hemingway N.0 | 660/1 660/1.HL8 660/1.HL10 Hemingway N.1 | 660/2 660/2.HL8 660/2.HL10 Hemingway N.2 | 660/3 660/3.HL8 660/3.HL10 Hemingway N.3 | 660/4 660/4.HL8 660/4.HL10 Hemingway N.4 |
|--|--|--|--|--|



OCTAGONAL HANDLES / MANICI OTTAGONALI



| | | | | |
|-------------------------------|-------------------------------|-------------------------------|-------------------------------|-------------------------------|
| 659/0 Hemingway N.0 | 659/1 Hemingway N.1 | 659/2 Hemingway N.2 | 659/3 Hemingway N.3 | 659/4 Hemingway N.4 |
|-------------------------------|-------------------------------|-------------------------------|-------------------------------|-------------------------------|



“MEDESYS IN SPOT”

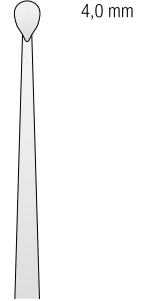
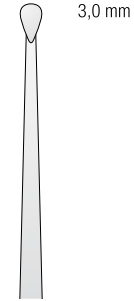
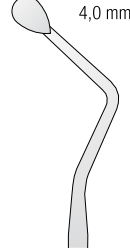
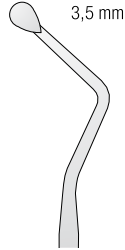
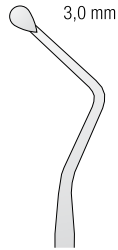
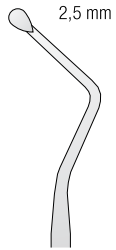
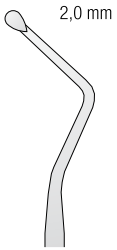
Bone curette Hemingway and Lucas are available also with blue titanium coated tip, all sizes, just add Ti to the standard code to order the item in the titanium finish.

*Cucchiai alveolari Hemingway e Lucas sono disponibili in tutte le misure con la punta anodizzata al Titanio blu, aggiungere **Ti** dopo il codice.*

(Es. 660/2.HL8 > 660/2-Ti.HL8)”



661/87
(1:1 scale / scala 1:1)



661/84
661/84.HL8
661/84.HL10
Lucas N. 84

661/85
661/85.HL8
661/85.HL10
Lucas N. 85

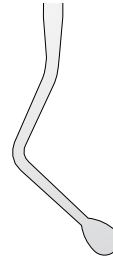
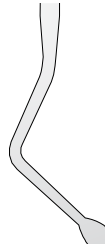
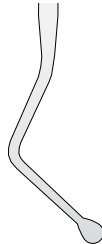
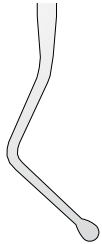
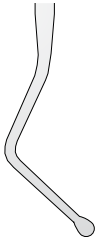
661/86
661/86.HL8
661/86.HL10
Lucas N. 86

661/87
661/87.HL8
661/87.HL10
Lucas N. 87

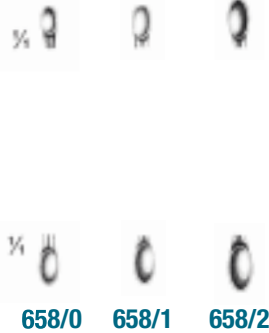
661/88
661/88.HL8
661/88.HL10
Lucas N. 88

660/9
660/9.HL8
Miller N.0
Spoon shape

660/10
660/10.HL8
Miller N.1
Spoon shape

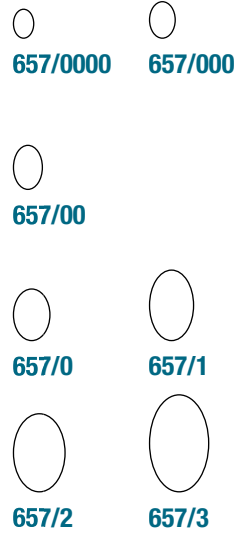


(1:1 scale / scala 1:1)



658/0 **658/1** **658/2**

(1:1 scale / scala 1:1)



657/0000 **657/000**
657/00
657/0 **657/1**
657/2 **657/3**

658 (mm 150)
Williger

657/1 (mm 170)
Volkman

